



G2 ES School Leaders' Town Hall

Blended Learning

Friday, September 25, 2020





Participating in a Virtual Town Hall



Nancy Wong

(GUG2 Elementary School Leader)



Dr. Moriska V. Selby

(GUG2 Elementary Assistant School Leader)



Yamil Benitez ("Mr. B.")

(GUG2 Associate Director of Operations)



Mr. Benitez (Mr. B)

ENGLISH/SPANISH Translation

Follow the steps below to join your preferred language channel.

Traducción INGLÉS / ESPAÑOL

Siga los pasos a continuación para unirse a su canal de idioma preferido.

STEP 1/ PASO 1:

Click
“Interpretation”

Haga clic en
"Interpretación"



Chat



Raise Hand



Q&A



Interpretation

STEP 2/ PASO 2:

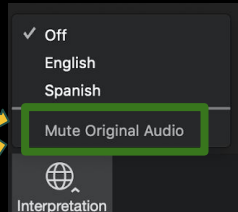
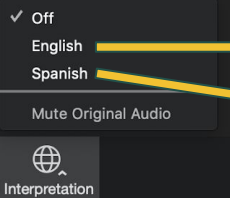
Click “English” or “Spanish”

Haga clic en "Inglés" o "Español"

STEP 3/ PASO 3:

Click “Mute Original Audio”

Haga clic en "Silenciar audio original"





AGENDA



Participating in a Virtual Town Hall.....	Dr. Selby & Mr. Benitez
Welcome.....	Dr. Wong
Roll Call	Dr. Selby
Blended Learning	Dr. Wong & Ms. Spahr
Upcoming Virtual Family Events.....	Dr. Selby
Contact Us.....	Dr. Wong
Preview the Next Town Hall.....	Dr. Wong



Polls

Child's Grade

1. What is your child's grade?
****If you have more than one child at GUG II, share the grade of the youngest child.****

☐ Kindergarten

☐ 1st Grade

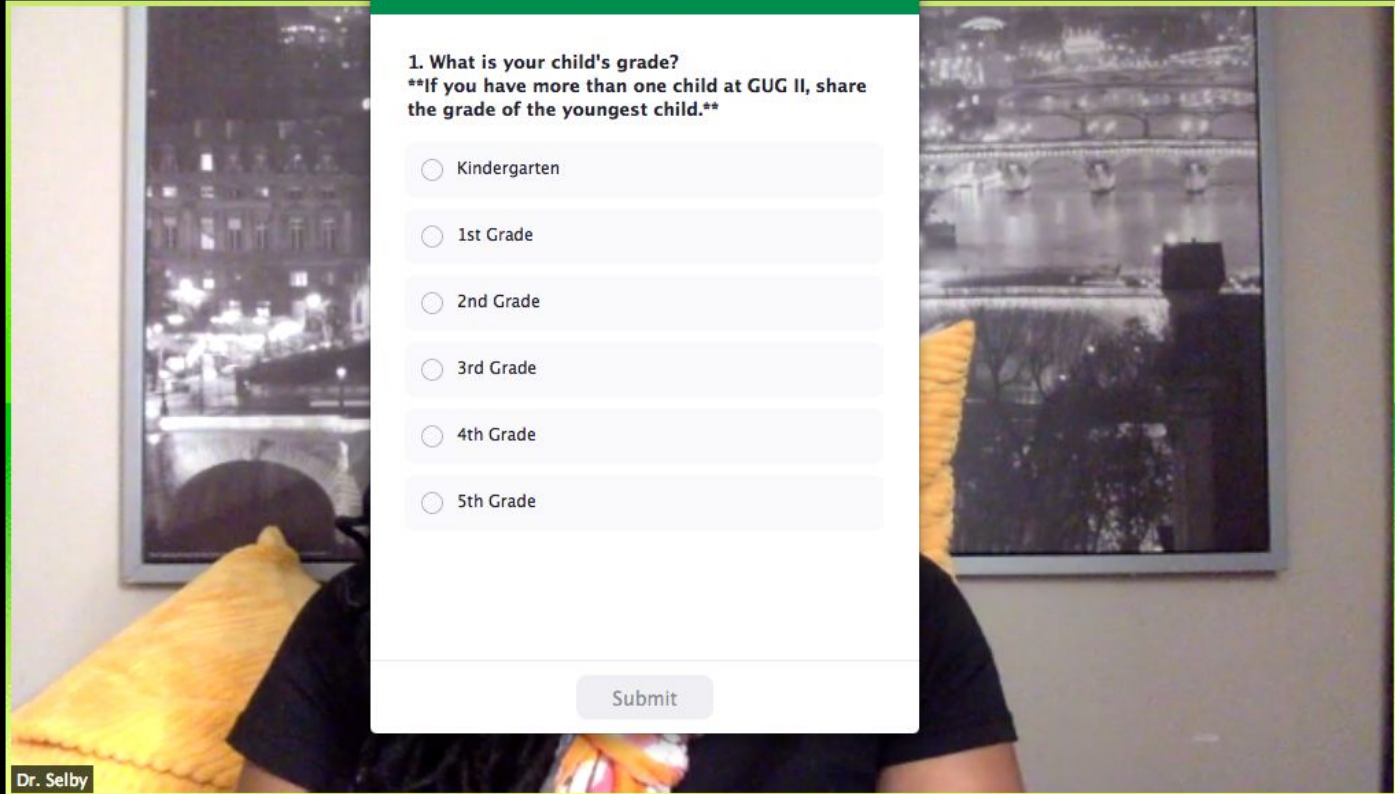
☐ 2nd Grade

☐ 3rd Grade

☐ 4th Grade

☐ 5th Grade

Submit



Dr. Selby



Time for
FEEDBACK



RESULTS





Mr. Benitez (Mr. B)

ENGLISH/SPANISH Translation

Follow the steps below to join your preferred language channel.

Traducción INGLÉS / ESPAÑOL

Siga los pasos a continuación para unirse a su canal de idioma preferido.

STEP 1/ PASO 1:

Click
“Interpretation”

Haga clic en
"Interpretación"



Chat



Raise Hand



Q&A



Interpretation

STEP 2/ PASO 2:

Click “English” or “Spanish”

Haga clic en "Inglés" o "Español"

STEP 3/ PASO 3:

Click “Mute Original Audio”

Haga clic en "Silenciar audio original"

✓ Off

English

Spanish

Mute Original Audio



Interpretation



Chat



Raise Hand



Q&A



English



Spanish

✓ Off

English

Spanish

Mute Original Audio



Interpretation

fri



BLended Learning at Growing Up Green II

Questions, Questions, Questions...

During the Meeting:

We will do our best to answer your questions during this meeting.

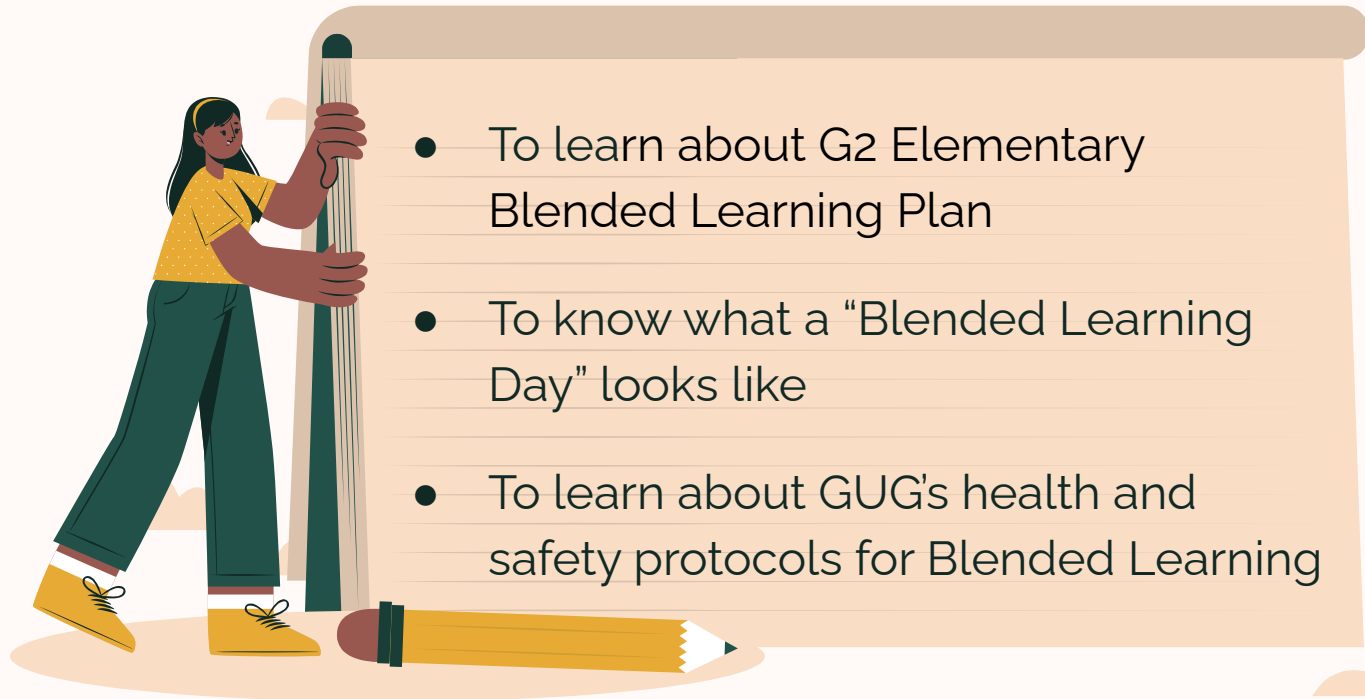
After the Meeting:

We will collect unanswered questions and address them

Growing Up Green Mission Statement for Reopening

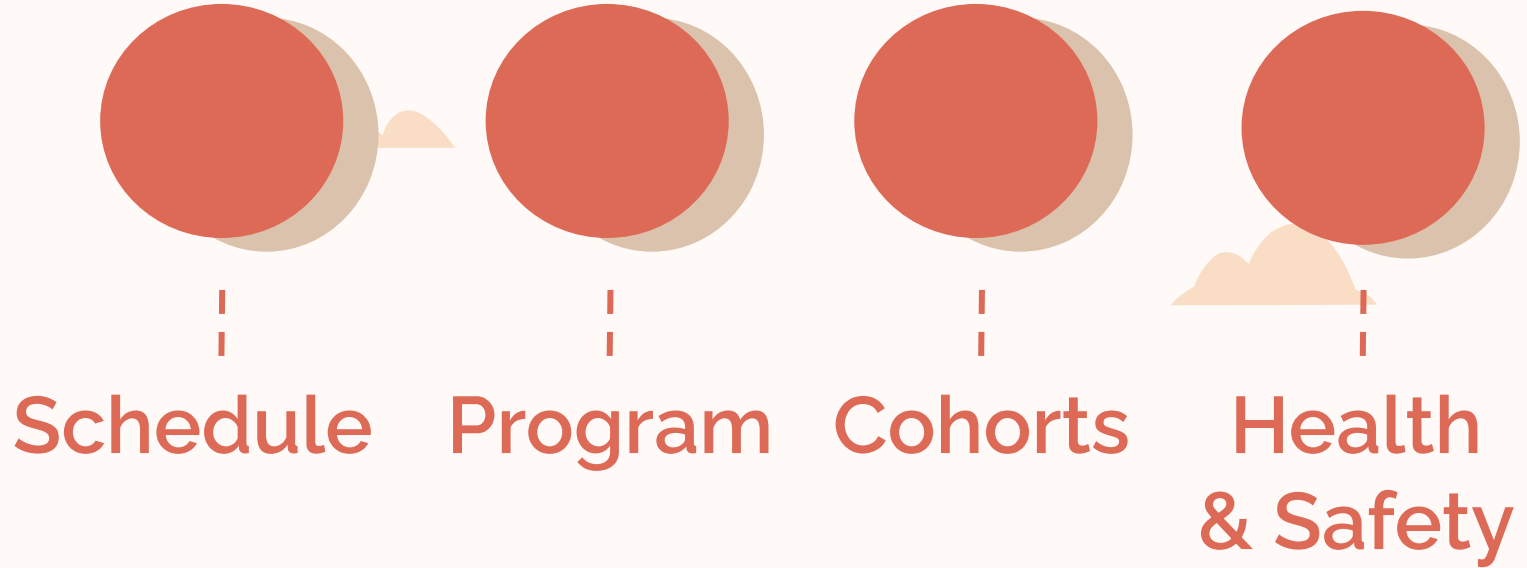
As we plan to reopen our buildings, Growing Up Green will keep the safety and health of our school community - students, staff and families - at the center of everything we do. We acknowledge the shared trauma our community experienced, and will lead with patience, compassion, comfort, understanding, and collaboration. We will use this opportunity to reflect, and rebuild as a stronger, more equitable, and vibrant learning community.

Goals for Blended Learning



- To learn about G2 Elementary Blended Learning Plan
- To know what a “Blended Learning Day” looks like
- To learn about GUG’s health and safety protocols for Blended Learning

Essential Components



fri

...



Blended Learning Schedules



Additional Dates to Opt Into Blended Learning



Opt In Date	START DATE
November 13	November 30
February 11	March 1
March 26	April 12

Note: these dates are subject to change

Weekly Schedule

	Monday	Tuesday	Wednesday	Thursday	Friday
Kindergarten	Group A	Group B	161st STREET LOCATION CLOSED FOR DEEP CLEANING		
1st Grade	Group A	Group B			
2nd Grade	Group A	Group B	N/A	152nd STREET LOCATION CLOSED FOR DEEP CLEANING	
3rd Grade	Group A	Group B	N/A		
4th Grade	Group A	Group B	N/A		
Middle School			5th & 6th grades		

Sample Student Schedule

Time	Event	Location
8:00 - 8:15	Arrival	K-1 (front door), 2nd (main door), 3rd (church door), 4th (main door)
8:15 - 8:30	Unpacking	Classrooms
8:30 - 9:00	Breakfast	Classrooms
9:00 - 9:30	Morning Meeting	Classrooms
9:30 - 10:00	Class #1	Classrooms
10:00 - 10:30	Snack and Bathroom Break	Classrooms and Bathrooms
10:30 - 11:00	Class #2	Classrooms
11:00 - 11:30	Lunch	Classrooms
11:30 - 12:00	Recess	Classrooms, Gym, or Yard
12:00 - 12:30	Class #3	Classrooms
12:30 - 1:00	Pack Up, Closing Circle, and Dismissal	K-1 (front door), 2nd (main door), 3rd (church door), 4th (main door)

Student Attendance



Present

Student
arrives at
school between
8:00-8:15

Tardy

Student
arrives at
school after
8:15



Sick

Student
arrives but does
not pass health
check

Note: Students are expected to be present for remote learning if they do not come to school on their assigned Blended Learning day.



Morning Arrival



Attendance & Mask Check	Temperature Check	Hand Sanitizer
<p>Students will line up outside.</p> <p>A staff member will check attendance & mask</p>	<p>A staff member will check each student's temperature</p>	<p>Students will use one pump of hand sanitizer</p>



Morning Arrival - continued



Transition	Sanitizer	Classroom
A staff member will be stationed to help direct traffic from entrance to classrooms	Students will use one pump of hand sanitizer before entering their classroom	Students will sit at their assigned seat



Breakfast & Lunch



Delivery	Distribution	Trash	Cleaning
Meals will be delivered to bin outside each classroom	Teachers distribute meals to each student	Teachers will collect trash from each student	Teachers gives wipe to each student. Students wipes surface. Teachers collect wipes.



Bathroom Breaks

Class Breaks

Each class will have a scheduled bathroom break.

ONE student at a time.

Facilities will clean bathroom between each class.

Emergencies

Staff member will be in the hallway as the bathroom monitor.

Teacher will walkie the monitor.
Teacher will send the student.
Student returns to class.



Recess



Good Weather

Children will go outside
for recess according
to their schedule

Inclement Weather


Children will stay in the gym
or in their classroom




Dismissal



1:00 - 1:20



Students will be dismissed
from all available locations
at both buildings



fri

...



Academic Program

Academic Programs During Blended Learning

Learning in the School Building (blended)

Morning Meeting

Core Content Class #1

Core Content Class #2

Lab Class

Additional Learning at Home:

Students will watch recording of their Specials Class after they return home

Learning at Home (remote)

Morning Meeting

Core Content Class #1

Core Content Class #2

Lab Class

Specials Class

Cohorts



fri



Kindergarten & 1st Grade Learning Groups

Kindergarten Needs (94)

Categories	Number
Families Who Chose Blended Learning	50 kids
Groups Needed (capacity at 8)	7 groups
Remote Learning	44 kids

1st Grade Needs (90)

Categories	Number
Families Who Chose Blended Learning	46 kids
Groups Needed (capacity from 8-10)	6 groups
Remote Learning	44 kids

2nd, 3rd, & 4th Grade Learning Groups

2nd Grade (80)

Categories	Number
Families Who Chose Blended	50 kids
Groups Needed (capacity at 5-6)	9 groups
Remote	30 kids

3rd Grade (70)

Categories	Number
Families Who Chose Blended	37 kids
Groups Needed (capacity at 6-8)	6 groups
Remote	33 kids

4th Grade (69)

Categories	Number
Families Who Chose Blended	33 kids
Groups Needed (capacity at 7-8)	5 groups
Remote	36 kids


Health & Safety



fri



Mandatory Actions for Everyone



Temperature
Checks
Every Day

Wear a Face
Covering
that Fully
Covers the
Nose and
Mouth

Practice
Social
Distancing

Wash Hands
and/or
Sanitize
Hands Daily

Sanitation

Learning Materials	Limit the sharing of materials between students
Shared Spaces	Custodians will frequently sanitize the school building on a regular basis
Frequently Touched Surfaces	Custodians will sanitize multiple times on a daily basis
Bathrooms	Classrooms will have scheduled bathroom breaks
	Bathroom use will not exceed social distancing capacity
	Custodians will disinfect bathrooms continually each day

Question:

How is our ventilation system?

Ventilation systems at all school campuses

- currently being updated/renovated by our team of architects, engineers, and contractors
- will meet the **Department of Education requirements and NYC building codes**
- team will have this work completed by our Blended Learning start date of October, 13th.

Question:

Will everyone need to wear a mask?

What if a student comes to school without a mask?

Face coverings must be kept on at all times.

We will provide the student with:

- a mask (required)
- a shield (optional)
- goggles (optional)

Question:

What PPE will teachers have access to?



Masks



Gloves



Face Shield (optional)

Question:

What if a student is identified as sick once at school?

A staff member will stay with the student until a family member picks up the student.



152nd Street Location	161st Street Location
The Diner	Room on 1st Floor



Question:

What about visitors to the building?

- All visitors to the building must be reduced dramatically.
- If parents come to pick up children, they must wait outside and security or Ops will bring child to them.

School Buses for Blended Learning



fri



Question:

Why are yellow buses provided during Blended Learning?

As a school, we are balancing realistic concerns and the needs in our community.

Offering busing makes access to school more equitable within our community.

Question:

What do we know about busing?

- **Will be provided**
- Buses are at a limited capacity of 25%
- Buses are being cleaned once a day
- Bus drivers are not conducting health screenings
- No matrons on the bus
- Metro cards are available for students

Question:

What should families consider?

- GUG cannot control what takes place on the bus including masks and social distancing
- If you are able to find alternate transportation to school we encourage you to do so
- We reserve the right to pull back busing as an option if at any point we believe it to be contributing to an unsafe learning environment

Upcoming Virtual Family Events at Growing Up Green II



fri

...





Growing Up Green is proud to partner with The Connected Chef's Lifeline Groceries to bring healthy and wholesome groceries to our families.

Website: <https://theconnectedchef.com>

We hope this will be the start of a year-long partnership to support all our families. Families who are in need of this service are encouraged to sign up using this link:

<https://forms.gle/ju145nbS1pf7VujY6>

Lifeline Grocery Packages

This community initiative delivers high-density, nutritious groceries to families in Western Queens, NYC who have been disproportionately affected by COVID-19.

60,585

Family Meals Provided Weekly

2,885

Families Served Weekly

65,000

Pounds of Food Distributed Weekly



GUG II Parent Teacher Organization

Growing Up Green Charter Schools: Jamaica, NY

GENERAL MEETING (Elections!)
Wednesday, September 30th
6PM-7PM

Zoom Link: <https://zoom.us/j/95594012383>



The PTO Election Day is SEPTEMBER 30th!



Join Us to **Vote for the
2020-21 PTO Executive
Board Members!**

GUG II PTO Co-President Candidates



Blanca
Calderon



Dr. Shadiatu
Moustapha



Amenia
Ricketts

GUG II PTO Treasurer Candidate



Esther
Morrison

GUG II PTO Recording Secretary Candidates



Liz
Chin



Jason
Dooley

GUG II PTO Communications Secretary Candidate



Tia
Keenan

We Still Need a Middle School Representative on the PTO Executive Board!



If you are a parent or caregiver of a 5th or 6th grader, WE NEED YOU! The Middle School Representative represents the unique needs of Middle School students as PTO Executive Board member and to the GUG II administration. The Middle School Representative will meet monthly with the Middle School Leader. Email GUGCS2PTO@gmail.com if you are interested in this important role!

UPCOMING VIRTUAL FAMILY EVENTS

9/30

September - PTO General Meeting (Elections)

10/2

Election Results Announced on Social Media!

10/14

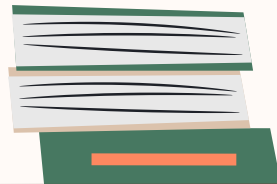
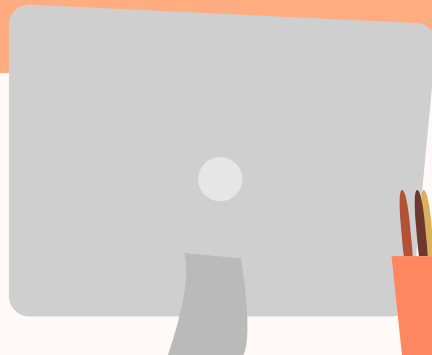
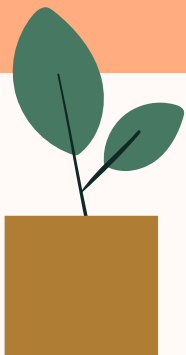
October - PTO General Meeting (w/ our new Executive Board)

11/11

November - PTO General Meeting

11/23-24

Family Conferences (Report Cards)





Contact Us!

Dr. Wong

wong@gugcs.org

Dr. Selby

selby@gugcs.org

Main Office:

<https://www.gugcs.org>

questions@gugcs.org

347-642-4306



CREDITS: This presentation template was created by Slidesgo, including icons by Flaticon, infographics & images by Freepik and illustrations by Stories



G2 ES School Leaders' Town Hall

Updates from the
First 6 Weeks of School

NEXT TOWN HALL:
Friday, October 23, 2020



Bye...Thank you for coming!
¡Adiós...Gracias por venir!



G2M2 Blended Learning Plan for 2020-2021

— September 23, 2020 —

English Spanish



Traductor de
Inglés Español



Yomaira Escano
(G2M2 Operations Manager)

ENGLISH/SPANISH Translation

Follow the steps below to join your preferred language channel.

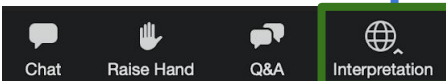
Traducción INGLÉS / ESPAÑOL

Siga los pasos a continuación para unirse a su canal de idioma preferido.

STEP 1/ PASO 1:

Click
"Interpretation"

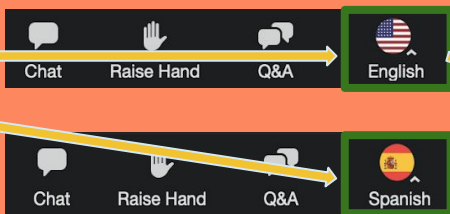
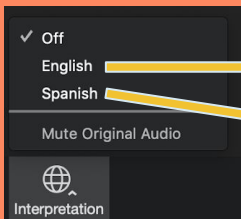
Haga clic en
"Interpretación"



STEP 2/ PASO 2:

Click "English" or "Spanish"

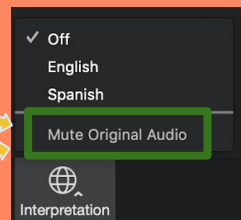
Haga clic en "Inglés" o "Español"



STEP 3/ PASO 3:

Click "Mute Original Audio"

Haga clic en "Silenciar audio original"



GUG Mission Statement

OUR MISSION

The Growing Up Green Charter School **empowers** children to be **conscious, contributing** members of **their** community through a **rigorous curriculum** and an **engaging green culture**. Graduates of GUGCS will be prepared to attend high-performing schools where their interdisciplinary **academic foundation**, knowledge of **sustainability**, and **strong sense of self** sets them apart as **leaders** of the future.

GUG Vision Statement

OUR VISION

GUGCS envisions an ***inclusive*** and ***diverse*** school community devoted to doing the work to ***create an equitable space***. GUGCS places ***students at the center*** of their education through authentic, relevant, and rigorous learning experiences grounded in ***inquiry***. Graduates of GUGCS will be innately ***curious*** learners, ***open-minded*** thinkers, compassionate ***critics***, productive ***problem-solvers***, and passionate ***challengers of the status quo*** who embrace differences. Graduates will act to promote an ***environmentally sustainable*** future and will face personal and social adversity with a growth mindset.

GUG Core Values

CORE VALUES

- **Giving Back** (giving back to others and our community)
- **Respect** (respect adults, friends and the community)
- **Embrace** (embrace differences of those around you)
- **Empower** (empower yourself to make good choices)
- **Nurture** (nurture those around you with kindness)

Student and Staff Cohorts

Big Picture Information

- Students will be in cohorts with small groups of other students for the full day
 - Students will not be able to interact with students from other cohorts
- Students will work with only two teachers throughout the course of the day
- The school day starts at 8:00 am and ends at 1:00 pm
 - Arrival and dismissal will be staggered depending on which group your student is in.
 - Information with which student group and arrival / dismissal time will be sent out by 10.7
 - 8:00 - 8:15 arrival
 - 1:00 - 1:15 dismissal

Group	# of Students	Rm	Capacity	Group	# of Students	Rm	Capacity
5-Blue	7	B-12	9	6-Blue	7	B-05	9
5-Green	7	B-13	9	6-Green	7	B-06	9
5-Red	6	B-14	9	6-Red	7	B-08	9
5-Pink	10	B-16	12	6-Pink	6	B-10	7
5-Grey	8	B-15	9	6-Grey	7	B-03	8
5-Black	9	B-18	11	6-Black	8	B-07	9
5th Total	47			6th Total	42		



Space Assignments

Grade 5-6

—

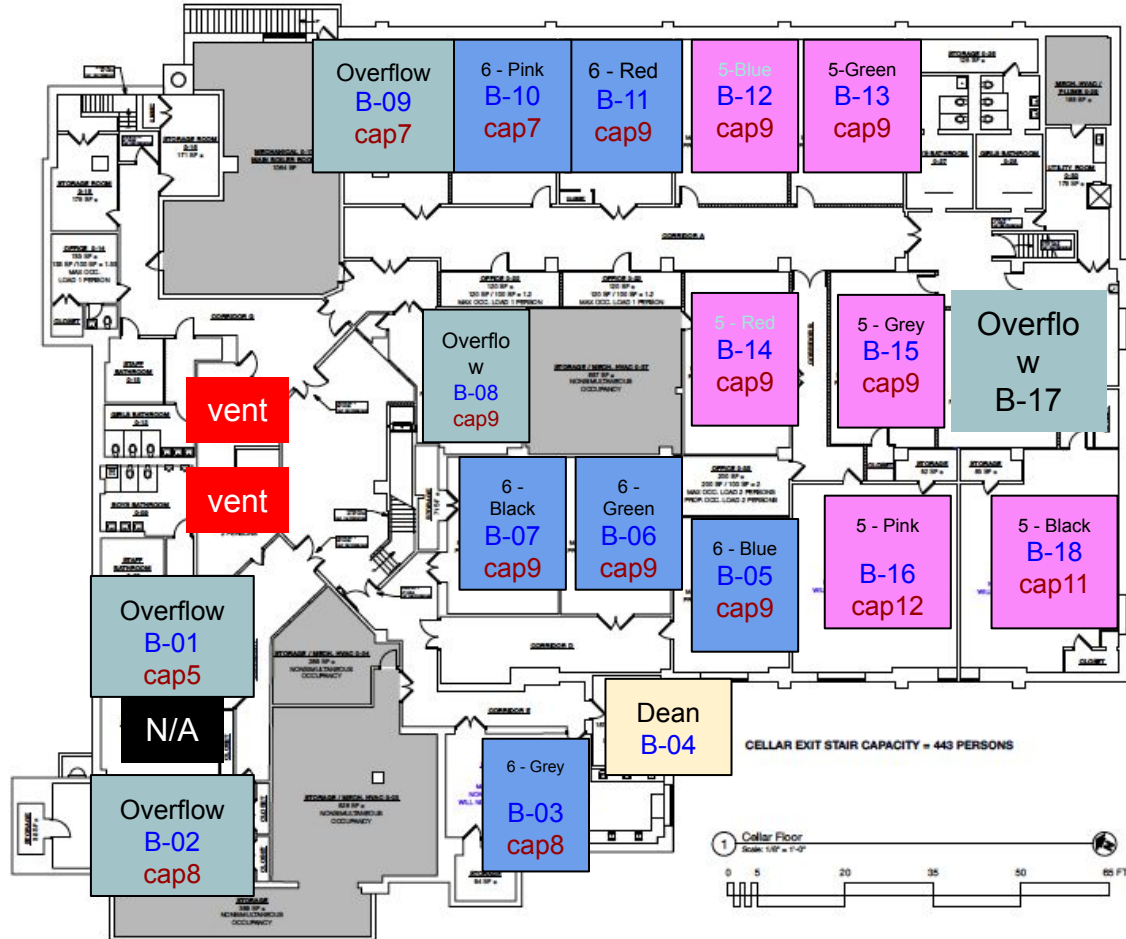
MS Only on Wednesday

5th and 6th on Wednesday

Will include:

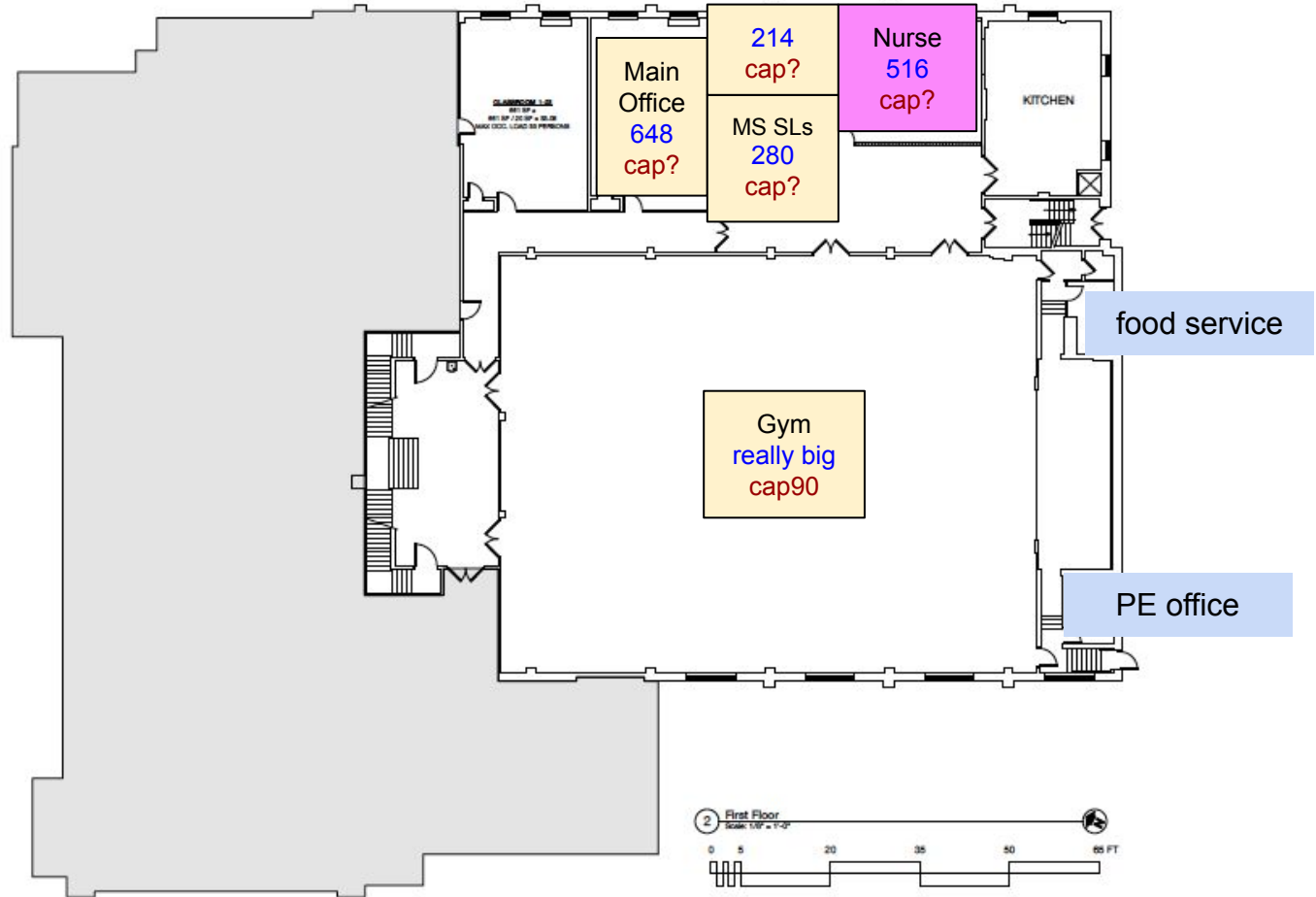
5th Grade
6th Grade

Support Services
5-6 Dean



5th and 6th on Wednesday

School
Leaders
and Main
Office / No
students on
first except
for break
time in Gym

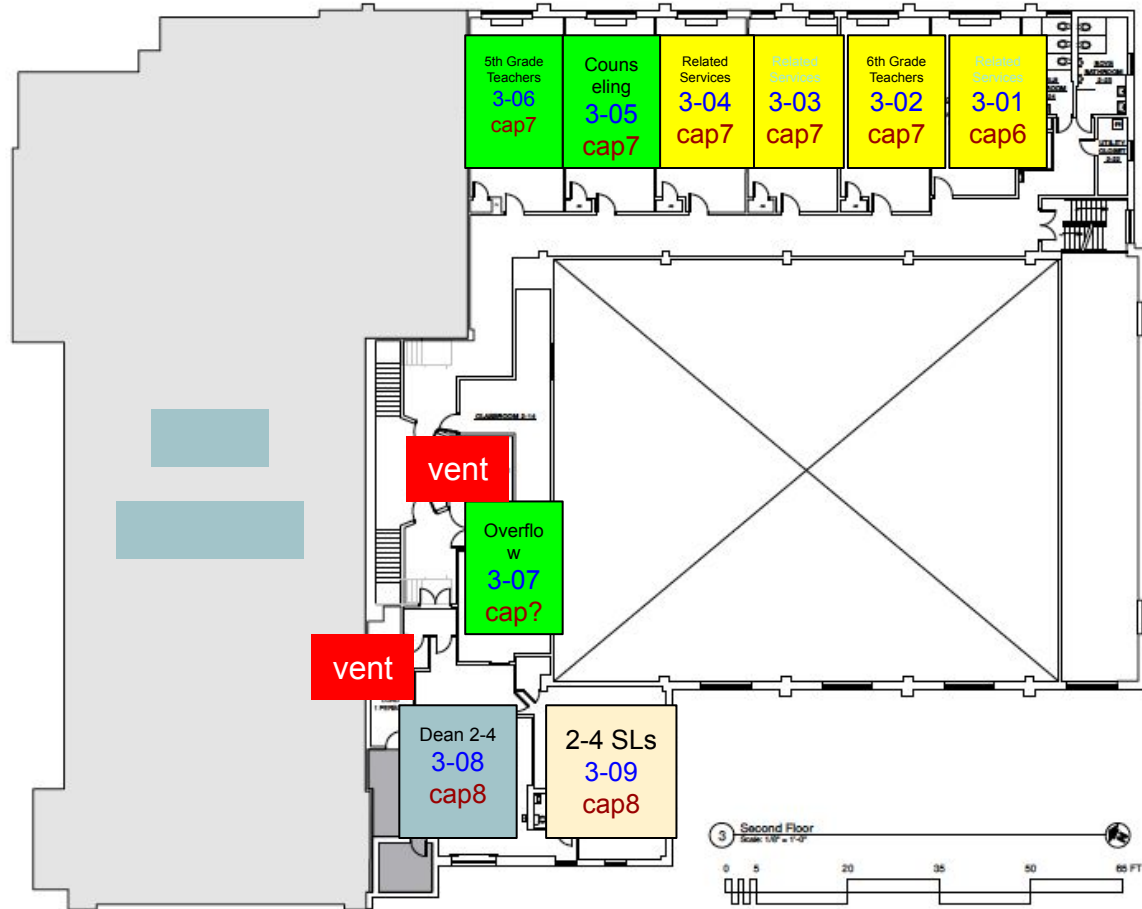


5th and 6th on Wednesday

Will include:

5th Grade Teacher
Relief Room
6th Grade Teacher
Relief Room

Counseling
Related Services



Blended Learning Schedule

Big Picture Information

- 1) Middle school students (5th and 6th grade) will come to school one day a week (Wednesdays)
 - a) The start date for blended learning is October 14th (unless anything changes with Covid related infection rates)

- 2) The school day will be from 8:00 - 1:00 pm
 - a) It is imperative that middle school families either sign the release for students to be dismissed by themselves or that they are waiting to pick up their students promptly at 1:00pm

Big Picture Information (Cont'd)

- 1) Students will eat lunch in their classrooms for 30 minutes
- 2) Students will get a 30 minute break in the gym
- 3) Students will complete a stretch break in the classroom for 20 minutes
- 4) When students leave school they are expected to complete the remainder of the asynchronous Google Classroom work not completed throughout the day

Related Services

Assumptions Made

- 1) Related Services will pull students either in small groups or individually upstairs in designated rooms
- 2) Ms. Zorali will support with Counseling
- 3) Mr. Verma will support with related academic services

100% Remote Learning

Assumptions Made

- 1) Students who are fully remote will complete asynchronous work posted to Google Classroom while other students are in the building completing their Google Classroom work
- 2) Students who are fully remote and are entitled to related services will receive them virtually while blended learning students are receiving related services in person

Health and Safety

Health and Safety

- ❖ All ventilation systems at all campuses are being repaired/renovated and will be ready by Blended Learning start date.
- ❖ All visitors to the building must be reduced dramatically.
 - If parents come to pick up children, they must wait outside and security or Ops will bring child to them.
- ❖ We encourage all families to give permission for students to “Leave on Own.” Dismissal form will be re-shared after this presentation.
- ❖ The Office of Pupil Transportation is providing bus service that is limited (25% capacity). More details to follow. Metrocards available for all students.

Health and Safety Continued

- ❖ Face Coverings must be kept on at all times
 - There is a 0% tolerance policy around this to ensure the safety of our whole community
- ❖ 6 feet of social distancing must be maintained at all times
 - There is a 0% tolerance policy around this to ensure the safety of our whole community
- ❖ For arrival all staff and students will have temperature checks at the door.
- ❖ We encourage staff and students to stay home if they are sick.
- ❖ Each grade will be assigned an entrance and exit door to limit exposure.
 - 5th grade will use the entrance on 84th drive
 - 6th grade will use the entrance on 152nd street
- ❖ Bathrooms will be assigned by grade and monitored to limit exposure.
- ❖ Dismissal will take place outside rain or shine.

Opting in and out of Blended Learning

If you are currently 100% remote

- Families who chose full-time remote learning will be able to reevaluate their choice during certain set time periods to change their preference and have their child to receive blended learning instead.
- When families choose to switch their student to blended learning, G2M2 will make every effort to accommodate these requests based on programming and space capacity.
 - The first date to opt into Blended Learning if you are 100% remote will be November 13th for a start date of November 30th
- The window will close at least two weeks prior to when the student would switch to in-person instruction to allow schools and families sufficient time to prepare.

If you opted for Blended Learning

- You can opt into fully remote at any time, but you must email the following group of people to ensure we are aware of the status of each student we support
 - gug2ops@gugcs.org
- If you do opt out of blended and then change your mind you will have to wait for the next entry date in order to attempt to move back into blended learning. Again this decision will be made based on programming and space capacity

Please Join...

Our PTO Meet the Candidate Night is happening at 6:00 pm.

We would love to see you there!

<https://zoom.us/j/95594012383>